



**SP Diagnostics - [www.spsupport.com](http://www.spsupport.com)**



## **Peugeot + Citroen Pin Code Extraction**

For more guides visit the SP Diagnostics Support website [www.spsupport.com](http://www.spsupport.com) and go to the Products – Service Tools – Documents section of the site.

# INTRODUCTION

## Peugeot and Citroen Pin Code Extraction

Peugeot and Citroen Pin Code Extraction for the SPi / KeyScan is a simple and easy process to extract the pin code. It allows the pin code to be read from the ECU memory of all Engine Control Units, Sagem, Johnson Controls and Valeo BSI units.

There are 2 modes of operation :-

**Working Key Mode :** The pin code can be read from the vehicle immobiliser BSI memory, when a working key is available, within 5 minutes.

**Lost Key Mode :** The pin code can be read from the vehicle immobiliser BSI memory, when there are no working keys, the time taken depends on the vehicle type and system, but typically takes between 15 and 90 minutes.

An additional cable, 1410-9401, is available for working with vehicles that do not have CAN BUS located within the OBD Diagnostic connector.

## Applications :-

Peugeot and Citroen based models from 2001 to 2016, as listed in the applications guide, are covered with this software.

Vehicles from 2005/2006 will work using the OBD port if CAN bus is available at the vehicle OBD connector, however for vehicles prior to this a direct connection can be made to the engine ECU connector CAN wires to enable communication with the BSI immobiliser ECU. To do this you will require the cable 1410-9401 which is available from your distributor or directly from the SP Support Helpline.

*The Pin Code software will only work on Peugeot and Citroen derived models, and will not read the pin code from Fiat or Toyota derived models such as the 107, C1 and Scudo.*

## VIN Check :-

To check whether the pin code can be read, please check the VIN number and check if it is listed in the applications list.

VIN Number example :

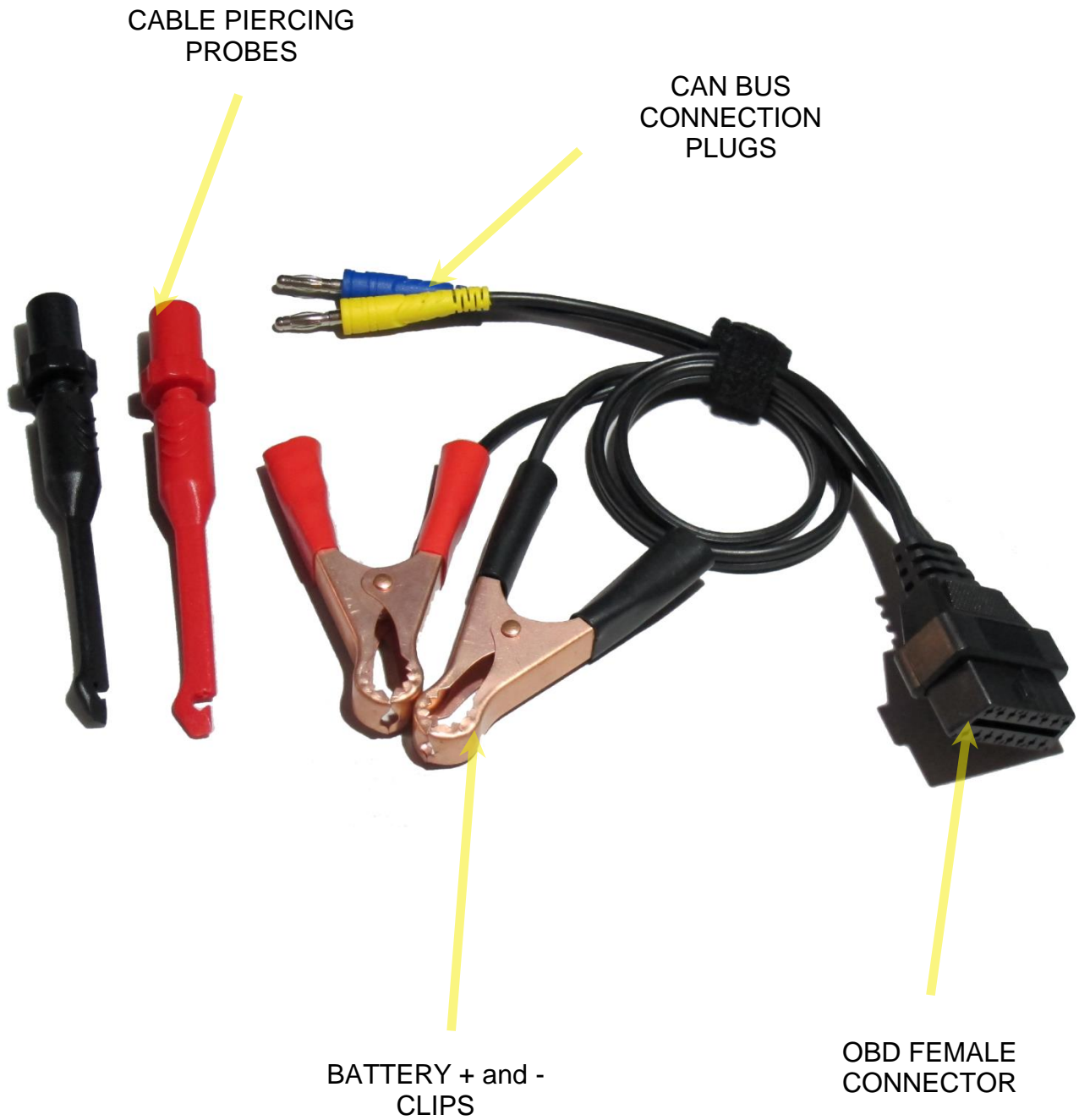
VIN	V	F	3	8	C	X	F	Z	E	8	0	7	0	1	0	1	1
Position	1	2	3	4	5	6	7	8	9	10	11	12	13	14	15	16	17

Engine Type can be found from digits 6,7 & 8

So Engine code is : XFZ

# GENERAL OPERATION

## 1410-9401 - PSA BSI Pin Extraction Kit



# GENERAL OPERATION

For OBD Socket Location  
You Can Use :-  
[www.wikiobd.com](http://www.wikiobd.com)

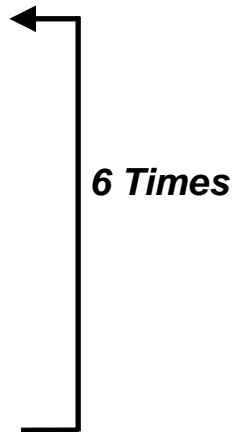
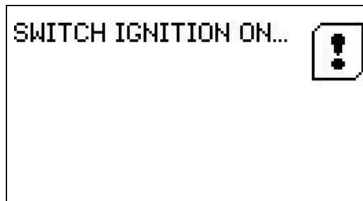
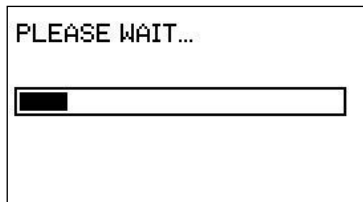
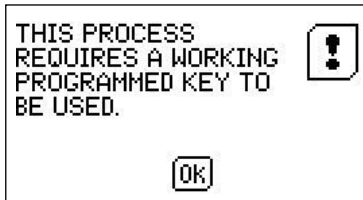


*Ensure the hazard lights are on and working for the duration of this procedure, this keeps the BSI unit active during the process. Because the ignition is on for a period of time with the indicators flashing it is advisable to use a suitable battery support unit*



# GENERAL OPERATION

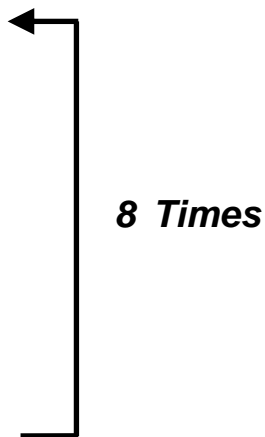
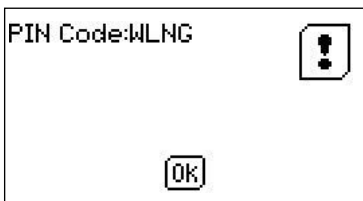
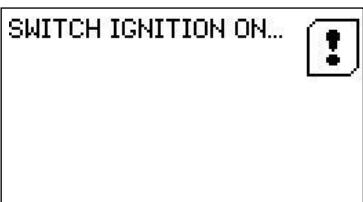
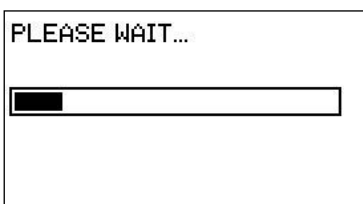
## PIN READING – Programmed Key Available



*Please Note : Some models require the removal of the ignition key between the IGN On/Off sequence during the Please Wait progress bar period.*

# GENERAL OPERATION

## PIN READING – Programmed Key **NOT** Available



*Please Note : Some models require the removal of the ignition key between the IGN On/Off sequence during the Please Wait progress bar period.*

## **PIN READING – Using the 1410-9401 BSI Cable Kit**

If there is no can bus connection at the obd port then direct connection to the ecu is required.

Locate the Engine ECU



Locate the correct ECU Connector



Connect the Yellow and the Blue Connectors to the correct CAN wires



CAN Wires are identified by twisted pairs, in case green and white.



Connect the Negative (Black) and Positive (Red) clamps to the vehicle battery



Connect cable to Key-Scan.

Once this is done you can carry out the PIN Read process as above using either process appropriate to Key Present or Lost Keys



# GENERAL OPERATION

## GUIDE TO ECU OR OBD CONNECTION

Vehicle does have CAN BUS on the OBD Connector

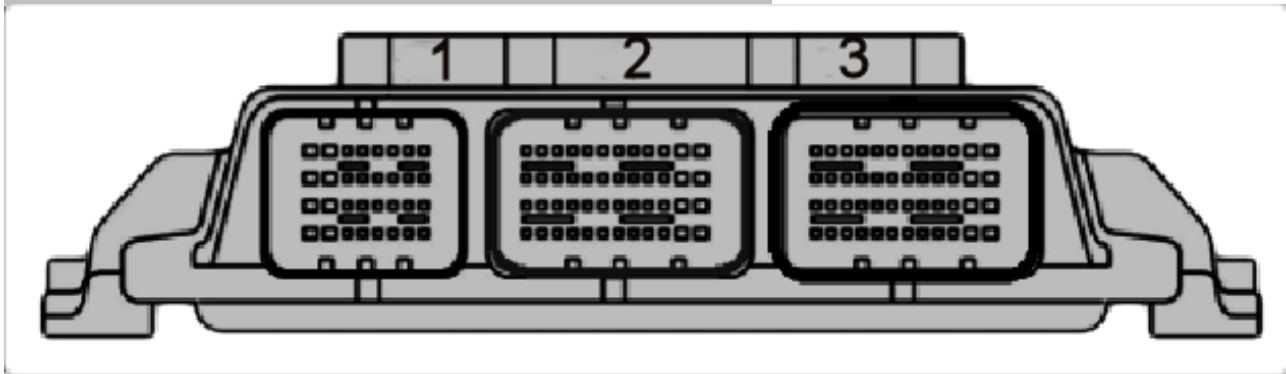


Vehicle does **NOT** have CAN BUS on the OBD Connector – *1410-9401 Required*





## PIN READING - DIRECT ECU CONNECTION



ENGINE	ENGINE	SYSTEM	CONNECTIONS
3FX	2.2L		
3FY	2.2L	MM6 LP or Bosch EDC16C34	
3FZ	2.2L	Magneti Marelli 4MP or 6LP	ECU connector 3 pin A3 and pin A4
4HG	2.2L	Continental SID208	
4HL	2.2L	Bosch EDC17CP42	
4HM	2.2L	Bosch EDC16CP39	ECU connector 1 pin A3 and A4
4HN	2.2L	Bosch EDC16CP39	ECU connector 1 pin A3 and A4
4HP	2.2L	Bosch EDC16CP39	ECU connector 1 pin A3 and A4
4HR	2.2L	Bosch EDC16CP39	ECU connector 1 pin A3 and A4
4HS	2.2L	Bosch EDC16CP39	ECU connector 1 pin A3 and A4
4HT	2.2L	Bosch EDC16CP39	ECU connector 1 pin A3 and A4
4HU	2.2L	Bosch EDC16CP39	ECU connector 1 pin A3 and A4
4HV	2.2L	Bosch EDC16CP39 or Visteon	
4HW	2.2L	Bosch EDC15C2	ECU connector 1 pin A3 and A4
4HX	2.2L	Bosch EDC15C2	ECU connector 1 pin A3 and A4
4HY	2.2L	Bosch EDC15C2	ECU connector 1 pin A3 and A4
4HZ	2.2L	Bosch EDC15C2	ECU connector 1 pin A3 and A4
5FA	1.6L	Bosch MED17.4.2	
5FR	1.6L	Bosch MED17.4	
5FS	1.6L	Bosch MEV 17.4.2	
5FT	1.6L	Bosch MED17.4	
5FU	1.6L	MEVD17.4.2	
5FV	1.6L	Bosch MED17.4	

5FW	1.6L	Bosch MEV17.4	
5FX	1.6L	Bosch MED17.4	
5FY	1.6L	Bosch MED17.4	
6FY	1.8L	Magneti Marelli MM6	
6FZ	1.8L	Sagem S2000	ECU connector 2 pins H3 and H4
8FP	1.4L	Bosch MED17.4.2	
8FS	1.4L	Bosch MEV17.4	
8HR	1.4L	Bosch EDC17C10	
8HS	1.4L	Bosch EDC16	
8HT	1.4L	Siemens SID805	
8HW	1.4L	Bosch EDC16C34	
8HX	1.4L	Siemens SID802/4	ECU connector 1 pin A3 and A4
8HY	1.4L	Delphi	
8HZ	1.4L	Bosch EDC16C3	ECU connector 1 pin A3 and A4
9HC	1.6L	Siemens SID807	
9HD	1.6L	Siemens SID807	
9HF	1.6L	Bosch EDC17C10	
9HL	1.6L	Siemens SID807	
9HM	1.6L	Bosch EDC17C10	
9HN	1.6L	Bosch EDC17C10	
9HP	1.6L	Bosch EDC17C10	
9HR	1.6L	Siemens SID807	
9HS	1.6L	Bosch EDC16C3	
9HT	1.6L	Bosch EDC16C3	
9HU	1.6L	Bosch EDC16C34/CF4	
9HV	1.6L	Bosch EDC16C3	
9HW	1.6L	Bosch EDC16C35	
9HX	1.6L	Bosch EDC16C3	
9HY	1.6L	Bosch EDC16C34	ECU connector 3 pin A3 and pin A4
9HZ	1.6L	Bosch EDC16C34	ECU connector 3 pin A3 and pin A4
AHW	2.0L	Delphi DCM6.2	
AHX	2.0L		
AHY	2.0L	Delphi DCM 3.5	

AHZ	2.0L	Delphi DCM 3.5	
AMF	2.2L	Visteon	
BDY	1.6L	Magneti Marelli G5	
BDZ	1.6L	Magneti Marelli G5	
BFZ	1.6L	Magneti Marelli 8P	
BHY	2.0L	Bosch Motronic	
BFZ	1.6L	Magneti Marelli 8P	
CFA	1.0L	Not applicable	
D6C	1.9L	Bosch Motronic M1.3	
D6D	1.4L	Bosch Motronic M3.1	
D6L	1.9L	Bosch Motronic M1.3	
D8A	1.9L	Bosch VE pump	
D8C	1.9L	Bosch VE pump	
D9B	1.9L	Bosch VE pump	
DDZ	1.9L	Fenix 1B	
DFW	1.9L	Bosch Motronic M1.3	
DHX	1.9L	Bosch VP20	
DJY	1.9L	Bosch VE pump	
DKZ	1.9L	Bosch Motronic M1.3	
DMA	3.0L	Bosch EDC16C39	
DMF	3.0L	Bosch EDC16C39	
F1C	3.0L	Bosch EDC16C39	
FHZ	1.3L	Magneti Marelli 8DF3	
HDY	1.1L	Bosch Mono-Motronic 3.1 or MM G6	
HDZ	1.1L	Bosch Mono-Motronic 3.1 or MM G6	
HFX	1.1L	Bosch M7.4.4 or Marelli 48P	
HFZ	1.1L		
HMZ	1.2L	Valeo MEV46	
HNY	1.2L		
HNZ	1.2L	Valeo VD 46.1	
KDX	1.4L	Bosch Mono-Motronic 3.0	
KDY	1.4L	Bosch Mono-Motronic 2.2	

KDZ	1.4L	Bosch Mono-Motronic 2.2	
KFT	1.4L	JCAE - Valeo	
KFU	1.4L	Magneti Marelli 6LPC	ECU connector 3 pin A3 and pin A4
KFV	1.4L	Sagem S2000 or J34P	ECU connector 3 pin A3 and pin A4
KFW	1.4L	Sagem S2000	ECU connector 3 pin A3 and pin A4
KFX	1.4L	Magneti Marelli 1AP	
L6A	1.8L	Magneti Marelli 8P	
L6B		Bosch Motronic MP 5.1	
LFW	1.8L	Magneti Marelli 8P	
LFX	1.8L	Magneti Marelli 1AP	
LFY	1.8L	Sagem SL96 or Bosch Motronic MP7.3	
LFZ	1.8L	Magneti Marelli 8P or Bosch Motronic MP 5.1	
N6A	1.6L	Mosch ME7.4.9	
NFS	1.6L	Bosch ME7	ECU connector 3 pin A3 and pin A4
NFP	1.6L	Bosch ME7.4.5	ECU connector 2 pins H3 and H4
NFT	1.6L	Bosch Motronic MP 7.4.4	
NFU	1.6L	Bosch ME7.4.4	ECU connector 2 pins H3 and H4
NFX	1.6L	Magneti Marelli 48P	
NFZ	1.6L	Motronic MP5.x	
PMF	3.0L	Bosch EDC17CP52	
R6A	2.0L	Magneti Marelli G5 mono	
R6D	2.0L	Magneti Marelli 8P	
R6E	2.0L	Bosch Motronic MP 5.2	
RDZ	2.0L	Magneti Marelli G5 mono	
RFJ	2.0L	Magneti Marelli 6LPB	ECU connector 3 pin A3 and pin A4
RFK	2.0L	Magneti Marelli 6LP	ECU connector 3 pin A3 and pin A4
RFN	2.0L	Magneti Marelli 48P	ECU connector 2 pins H3 and H4
RFR	2.0L	Magneti Marelli 48P	ECU connector 2 pins H3 and H4
RFT	2.0L	Magneti Marelli 48P	ECU connector 2 pins H3 and H4
RFU	2.0L	Magneti Marelli 8P	
RFV	2.0L	Bosch Motronic MP 7.x	
RFW	2.0L	Magneti Marelli 8P	
RFX	2.0L	Magneti Marelli 8P	

RFZ	2.0L	Bosch Motronic MP 5.1	
RGX	2.0L	Bosch Motronic MP 7.x	
RGY	2.0L	Bosch Motronic MP 3.2	
RGZ	2.0L	Magneti Marelli 1AP	
RHC	2.0L	Delphi DCM 3.5	
RHD	2.0L	Delphi DCM 3.5	
RHH	2.0L	Delphi DCM 3.5	
RHJ	2.0L	Siemens SID 803	
RHK	2.0L	Siemens SID 803 or Delphi DCM3.5	ECU connector 3 pin A3 and pin A4
RHL	2.0L	Delphi DCM 3.4	
RHM	2.0L	EDC15C2	ECU connector 1 pin A3 and A4
RHO	2.0L	Delphi DCM3.5	
RHR	2.0L	Delphi DCM 3.4 or Siemens SID803A	ECU connector 3 pin A3 and pin A4
RHS	2.0L	Bosch EDC15C2	ECU connector 1 pin A3 and A4
RHT	2.0L	Bosch EDC15C2	ECU connector 1 pin A3 and A4
RHW	2.0L	Bosch EDC15C2	ECU connector 1 pin A3 and A4
RHX	2.0L	Bosch EDC15C2	ECU connector 1 pin A3 and A4
RHY	2.0L	Bosch EDC15C2	ECU connector 1 pin A3 and A4
RHZ	2.0L	Bosch EDC15C2	ECU connector 1 pin A3 and A4
S6A	3.0L	Fenix 3B	
SFZ	3.0L	Fenix 3B	
SKZ	3.0L	Fenix 4	
T8A	2.5L	VE pump	
THX	2.5L	Bosch MSA11	
THY	2.5L	Bosch MSA11	
TMF	2.2L	Siemens SID 208 or Visteon	
UFZ	3.0L	Fenix 3B	
UHZ	2.7L	Siemens SID 201	
UMF	2.2L	Siemens SID 208	
WJY	1.9L	Lucas Pump	
WJZ	1.9L	Lucas Pump	
XFV	3.0L	Bosch ME 7.4.7	
XFW	3.0L	Bosch Motronic ME 7.4.6	

XFX	3.0L	Bosch Motronic ME 7.4.6	
ZMZ	1.0L	Valeo MEV46.11	

## APPLICATIONS - Citroen

MODEL	VIN CODE
Berlingo	HDY
Berlingo	HDZ
Berlingo	HFX
Berlingo	KFW
Berlingo	KFX
Berlingo	RHY
Berlingo	NFU
Berlingo 2	9HW
Berlingo 2	9HX
Berlingo 2	NFU
Berlingo 2	RHY
Berlingo 3	5FS
Berlingo 3	9HF
Berlingo 3	9HL
Berlingo 3	9HN
Berlingo 3	9HP
Berlingo 3	9HS
Berlingo 3	9HT
Berlingo 3	9HX
Berlingo 3	9HZ
Berlingo 3	NFU
C2	8HX
C2	8HY

C2	8HZ
C2	HFC
C2	HFX
C2	KFV
C2	NFU
C3	8FP
C3	8HW
C3	8HX
C3	8HY
C3	8HZ
C3	9HP
C3	9HX
C3	9HZ
C3	HFX
C3	HMZ
C3	KFU
C3	KFV
C3	NFU
C3	ZMZ
C3 Picasso	8FS
C3 Picasso	9HP
C3 Picasso	9HX
C3 Pluriel	8HX
C3 Pluriel	8HZ
C3 Pluriel	KFV
C3 Pluriel	NFU
C4	5FS
C4	5FW
C4	9HC
C4	9HD
C4	9HP
C4	9HR



C4	9HX
C4	9HY
C4	9HZ
C4	KFU
C4	NFU
C4	RFJ
C4	RFN
C4	RHD
C4 Aircross	9HD
C4 Cactus	BHY
C4 Cactus	HMZ
C4 Cactus	HNZ
C4 Cactus	RHH
C4 Picasso	5FX
C4 Picasso	9HC
C4 Picasso	9HR
C4 Picasso	9HZ
C4 Picasso	RFJ
C4 Picasso	RHH
C4 Picasso	RHJ
C5	4HS
C5	4HT
C5	4HX
C5	6FZ
C5	9HL
C5	9HX
C5	9HY
C5	9HZ
C5	RFJ
C5	RHF
C5	RHH
C5	RHR

C5	RHS
C5	RHY
C5	RHZ
C6	XFV
C8	4HS
C8	4HW
C8	RFJ
C8	RFN
C8	RHK
C8	RHM
C8	RHO
C8	RHR
C8	RHT
C8	XFV
C8	AFX
Dispatch	9HF
Dispatch	9HM
Dispatch	9HU
Dispatch	9HZ
Dispatch	AHY
Dispatch	DHX
Dispatch	P8C
Dispatch	RHK
Dispatch	RHR
Dispatch	RHX
Dispatch	RHZ
Dispatch	RFN
DS3	5FR
DS3	5FS
DS3	5FV
DS3	8FP
DS3	9HD

DS3	9HP
DS3	9HR
DS3	HMZ
DS4	9HD
DS4	9HR
DS4	RHH
DS5	9HD
DS5	9HR
DS5	RHH
Jumper	4HG
Jumper	4HU
Jumper	4HV
Jumper	RFW
Jumpy	P8C
Jumpy	RFN
Jumpy	RHW
Jumpy	RHZ
Jumpy	DHX
Xsara	KFX
Xsara	NFZ
Xsara	LFX
Xsara	LFZ
Xsara	LFY
Xsara	RFV
Xsara	RFS
Xsara	RHY
Xsara	RHZ
Xsara Picasso	6FZ
Xsara Picasso	9HX
Xsara Picasso	NFU
Xsara Picasso	NFV
Xsara Picasso	NFZ

Xsara Picasso	RFN
Xsara Picasso	RHY

## APPLICATIONS - Peugeot

MODEL	VIN CODE
1007	8HZ
1007	KFV
1007	NFU
1007	NFV
206	HFX
206	HFZ
206	KFX
206	KFT
206	KFU
206	KFW
206	NFU
206	NFZ
206	RHY
206	RFN
207	5FS
207	5FX
207	5FW
207	5FX
207	5FY
207	8FS
207	8HR
207	8HZ
207	9HP
207	9HV
207	9HX
207	9HY
207	9HZ

<b>MODEL</b>	<b>VIN CODE</b>
207	KFT
207	KFU
207	KFV
207	NFU
208	8HR
208	9HC
208	9HP
208	HMZ
208	ZMZ
2008	9HP
306	HDY
306	HDZ
306	KDX
306	KFX
306	KFX
306	LFZ
306	NFT
306	NFZ
306	R6D
306	RFT
306	RFV
306	RFX
306	RFY
306	RFY
306	WJZ
307	8HZ
307	9HV
307	9HX
307	9HY
307	9HZ
307	HFW

<b>MODEL</b>	<b>VIN CODE</b>
307	KFU
307	KFW
307	NFU
307	RFJ
307	RFK
307	RFN
307	RHR
307	RHS
307	RHY
308	5FS
308	5FT
308	5FU
308	5FW
308	5FX
308	5FY
308	8FS
308	9HP
308	9HR
308	9HX
308	9HZ
308	HNY
308	N6A
308	RHR
308	RFJ
308	RFJ Bioflex
3008	5FS
3008	5FV
3008	5FW
3008	5FX
3008	9HD
3008	9HR



<b>MODEL</b>	<b>VIN CODE</b>
3008	9HZ
406	BFZ
406	DHX
406	LFX
406	LFY
406	LFY
406	RFV
406	RGX
406	RHS
406	XFZ
407	9HZ
407	RFN
407	RHF
407	RHL
407	RHR
407	UHZ
508	4HL
508	9HL
508	9HR
508	RHC
508	RHH
5008	5FV
5008	9HD
5008	9HR
5008	9HZ
607	4HX
607	UHZ
806	RFU
806	RFV
806	RGX
806	WJY

<b>MODEL</b>	<b>VIN CODE</b>
807	3FZ
807	4HW
807	RHK
807	RHM
807	RHT
807	RHW
Bipper	8HS
Bipper	FHZ
Bipper	KFT
Expert	DHX
Expert	RHR
Expert	RHW
Expert	RHX
Expert	RHZ
Partner	9HF
Partner	9HW
Partner	9HX
Partner	RHY
Partner	HDZ
Partner	KFX
Partner	LFX
Partner	N6A
Partner	NFU
Partner	RHY
Partner	WJZ

## APPLICATIONS - Fiat

MODEL	VIN CODE
Scudo	9HU
Scudo	RHK
Scudo	RHR

## APPLICATIONS - Toyota

MODEL	VIN CODE
Proace	AHZ

# GENERAL OPERATION

## **BSI WAKE UP PROCEDURES**

Before disconnecting battery:

Close all doors  
Open the driver's window  
Ignition **OFF**  
Wait 2 minutes  
Remove key

After disconnecting the battery  
Wait for 5 minutes before working on any  
SRS item, or before proceeding to next step

After reconnecting the battery Reach inside the  
vehicle and turn on the sidelights  
Turn the ignition **ON**  
Wait 1 minute  
Start Engine

### ***Initialising the Electric windows***

Close driver's window fully  
Press and hold the power window switch to close until the window is fully closed  
Wait for 1 second  
Release the switch  
Open the driver's window fully  
Press and hold the power window switch to open until the window is fully open  
Wait for 1 second  
Release the switch

### ***Repeat the procedure for the passenger's window***

Initialising the remote control  
Turn the ignition **ON**  
Press and hold lock button on the remote control for 4 seconds  
Turn the ignition **OFF**  
Remove the key from the ignition switch and test the remote





Unit 2 Atworth Business Park, Atworth, Melksham, Wiltshire, SN12 8SB, UK  
Sales & Customer Services: +44(0) 1225 702104      Facsimile: + 44 (0)8700 941 753  
Email: [sales@spdiagnostics.com](mailto:sales@spdiagnostics.com)      Email: [support@spdiagnostics.com](mailto:support@spdiagnostics.com)  
[www.spdiagnostics.com](http://www.spdiagnostics.com)      [www.spsupport.com](http://www.spsupport.com)